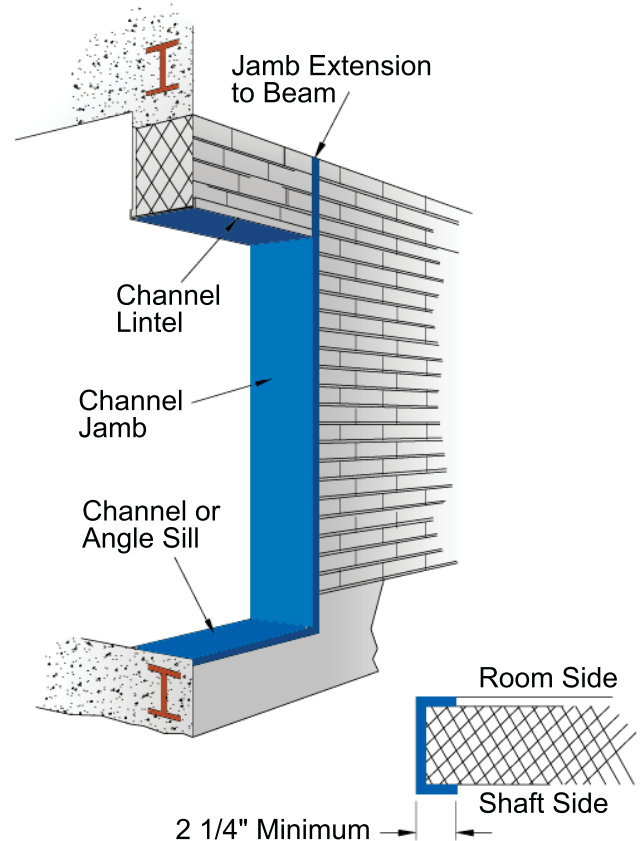
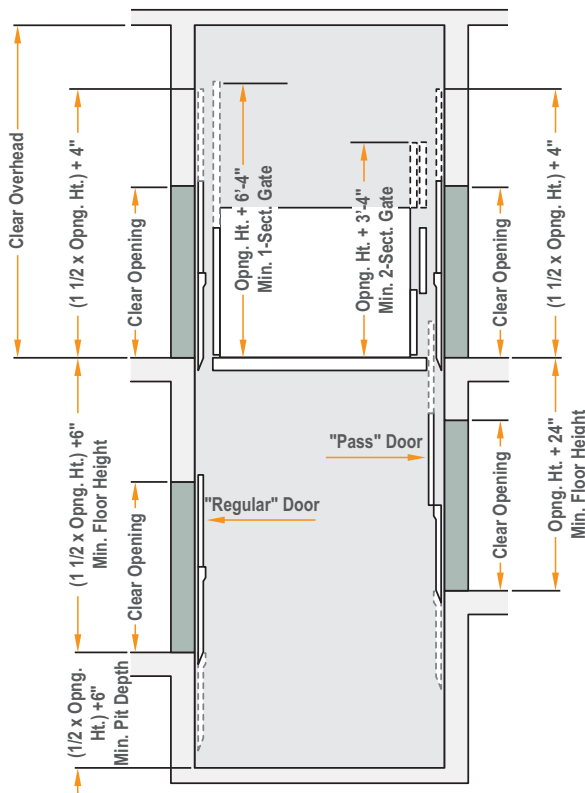


Freight Door Details

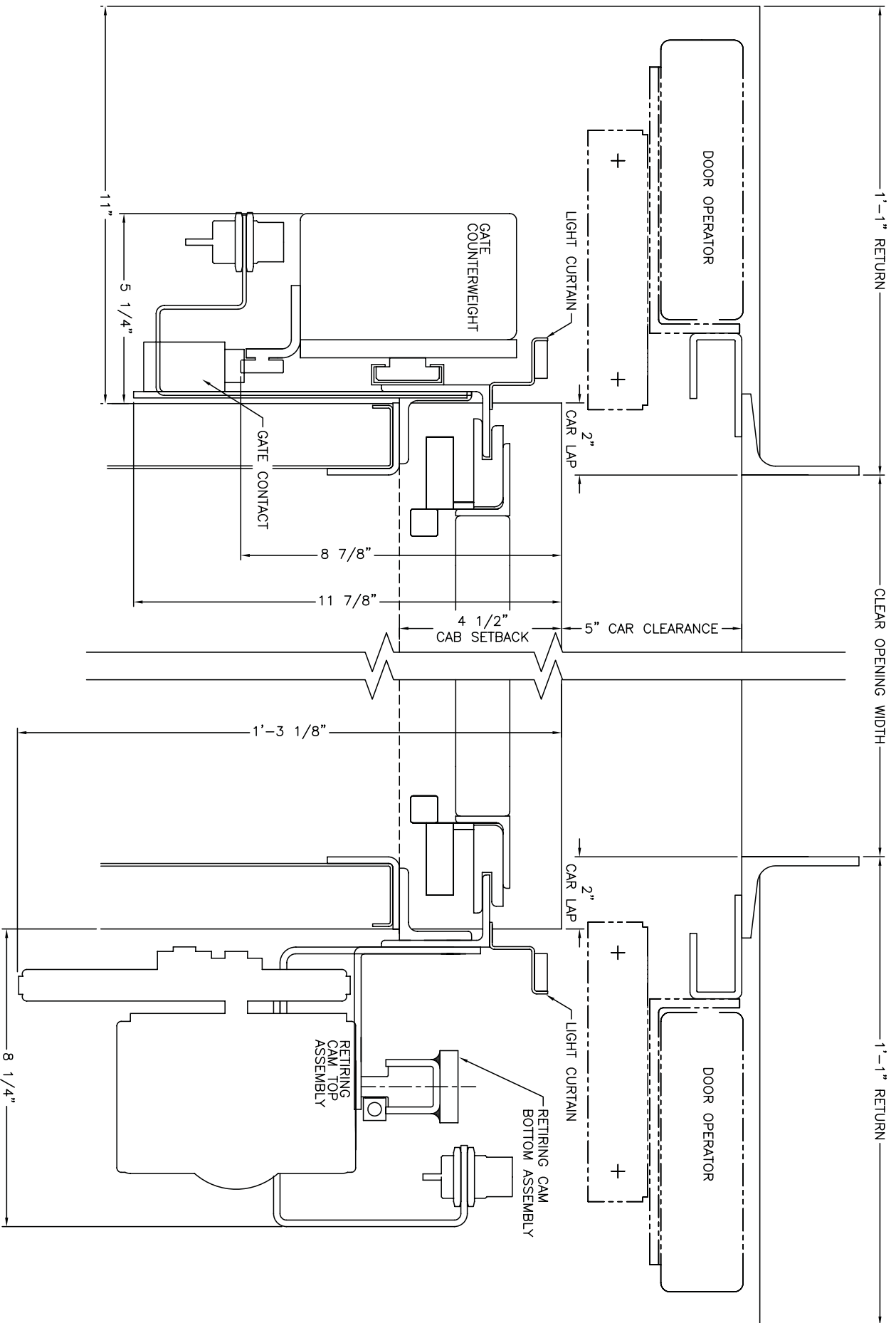


Bi-Parting Freight Doors

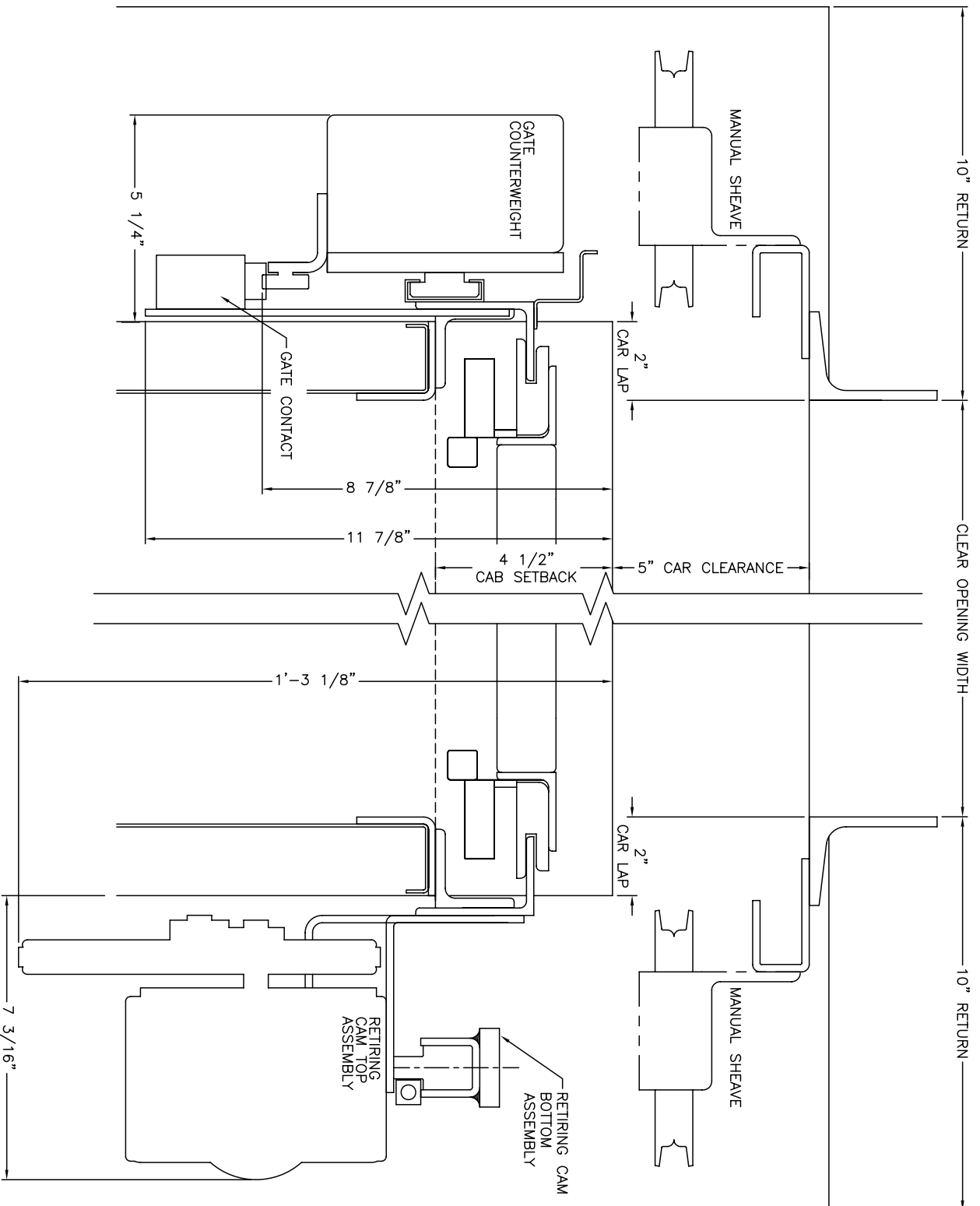
- Regular and pass-type doors are illustrated. Special construction is available for substandard spaces. The layouts are based upon the use of bi-parting hoistway doors and vertical rise car gates.
- The capacities and sizes of Freight Elevators shown in this catalog are based on industry "standards" for general usage. Since freight elevators, by nature, are generally designed for a specific loading requirement, we suggest that you contact your Minnesota Elevator, Inc. representative for elevator design and dimensions to suit your particular needs.
- (Based on PEELLE gates and doors. See specific application drawings on the next pages for required dimensions that may vary from these general requirements.) Maximum Clear Door Opening Width is Platform Width minus 4".

Frame Requirements

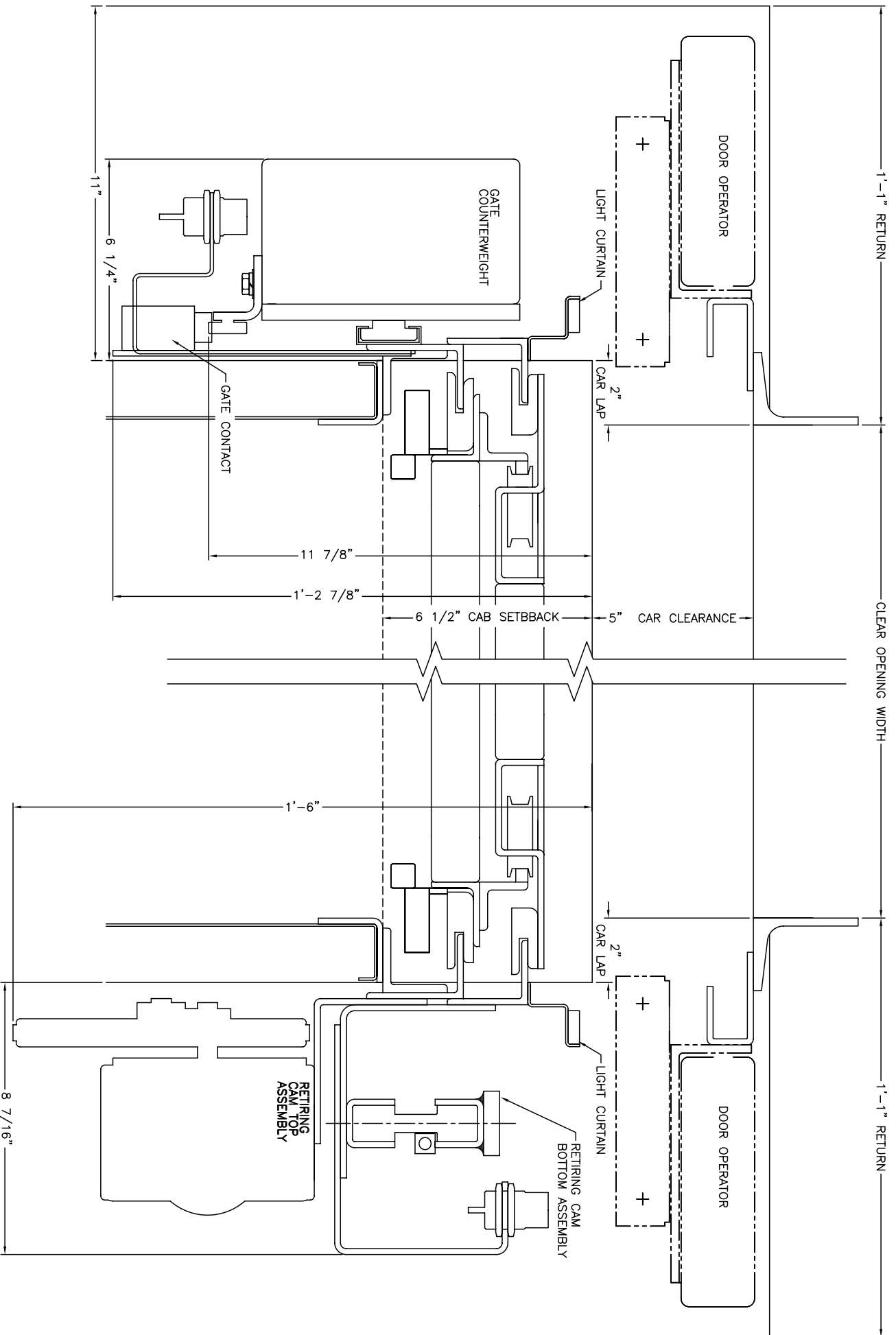
- All Bi-parting freight elevator door openings must have metal frames and sills, and steel jambs should extend from floor level to beam above. (Extensions are not required for poured concrete or solid brick walls.)
- Shaftway faces of frames and sills must be in alignment, and plumb from top to bottom landing.
- Frames should be of structural standard channels (not stair stringer or junior channels), or of 1/4" or heavier formed steel, with at least a 2 1/4" return on the hatch side. Sills should be of structural angle.



POWER OPERATED SINGLE SECTION GATE WITH REGULAR BI-PARTING DOOR

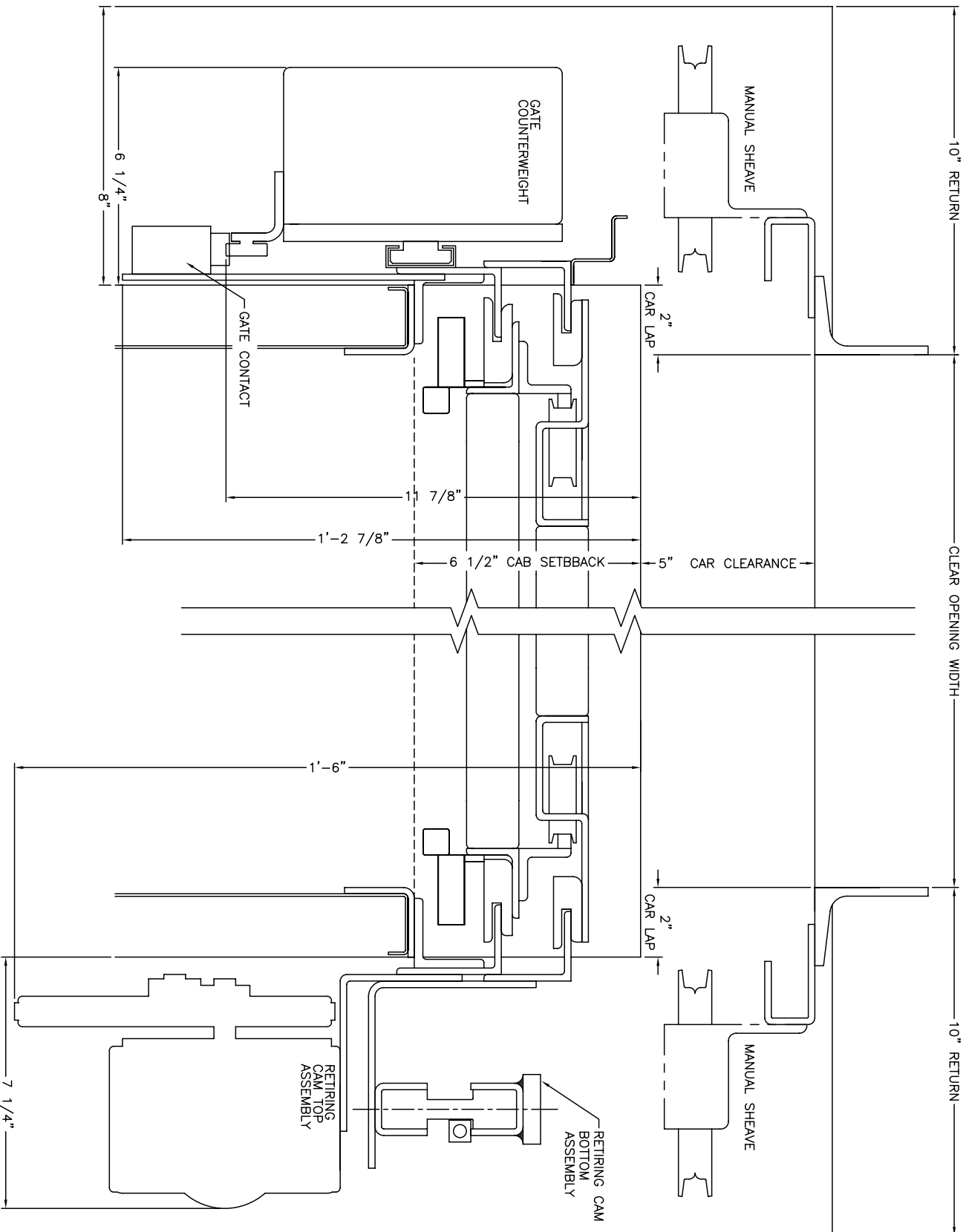


**MANUAL OPERATED SINGLE
SECTION GATE WITH REGULAR
BI-PARTING DOOR**

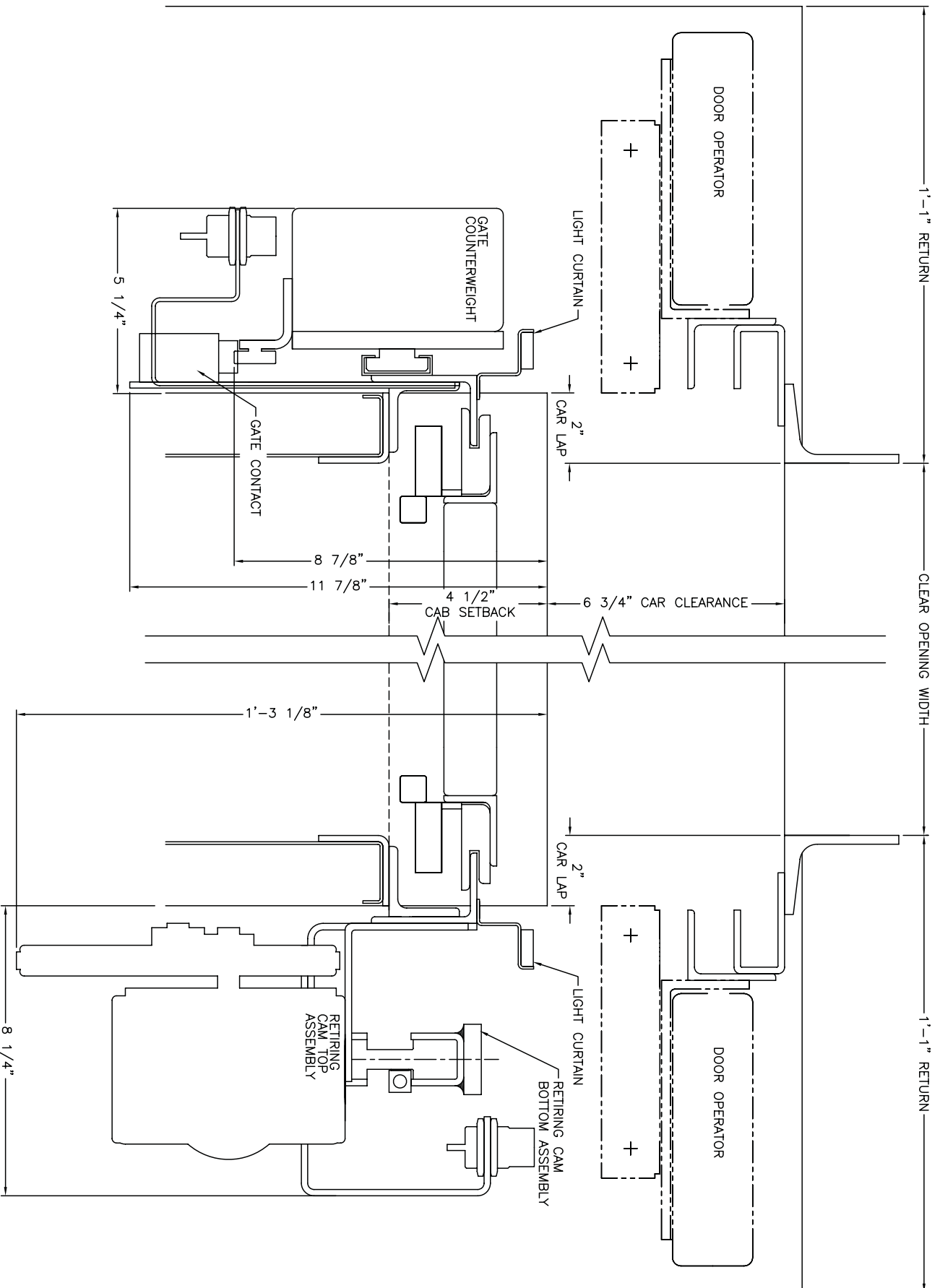


**POWER OPERATED TWO
SECTION GATE WITH REGULAR
BI-PARTING DOOR**

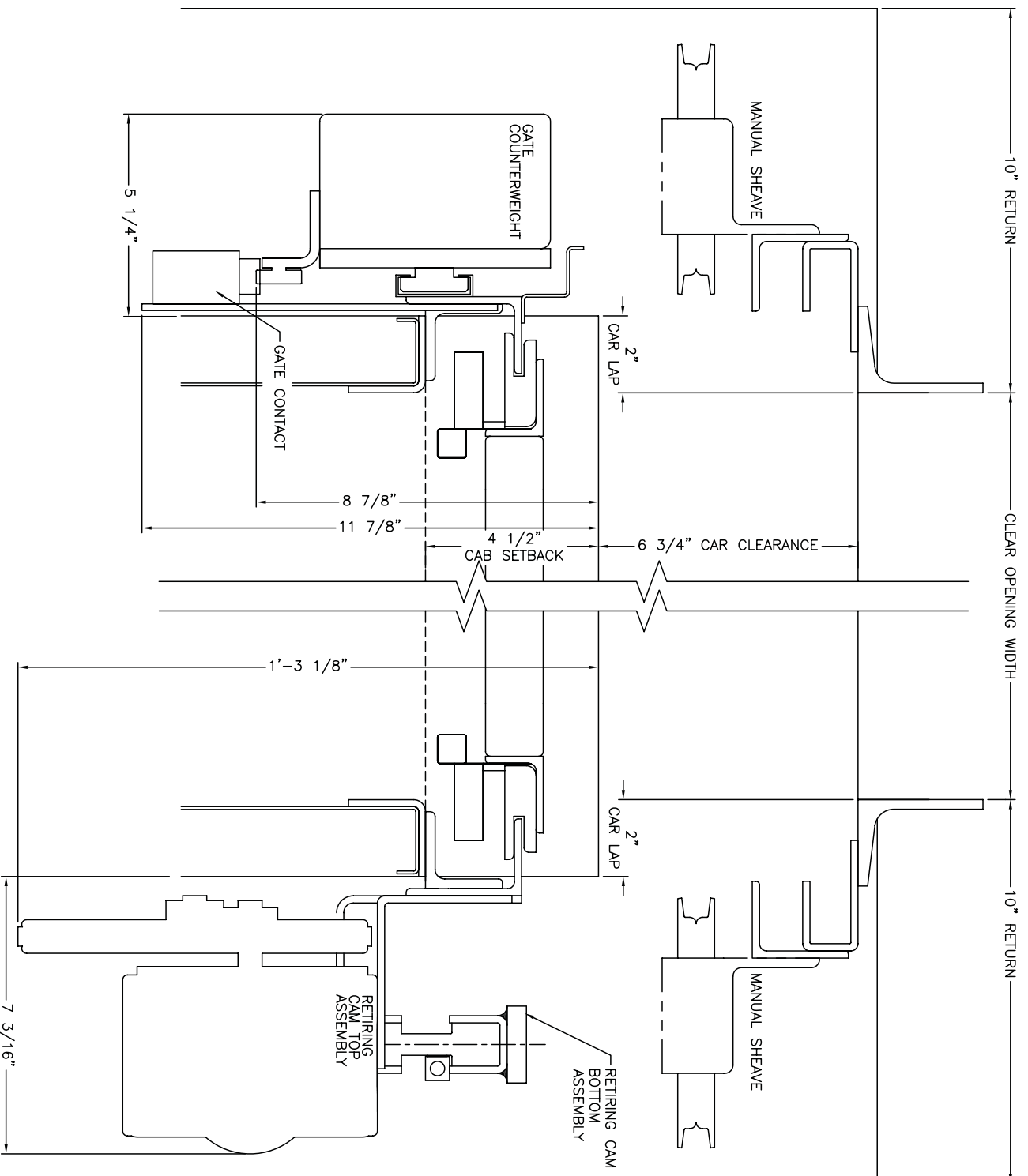
MANUAL OPERATED TWO SECTION GATE WITH REGULAR BI-PARTING DOOR



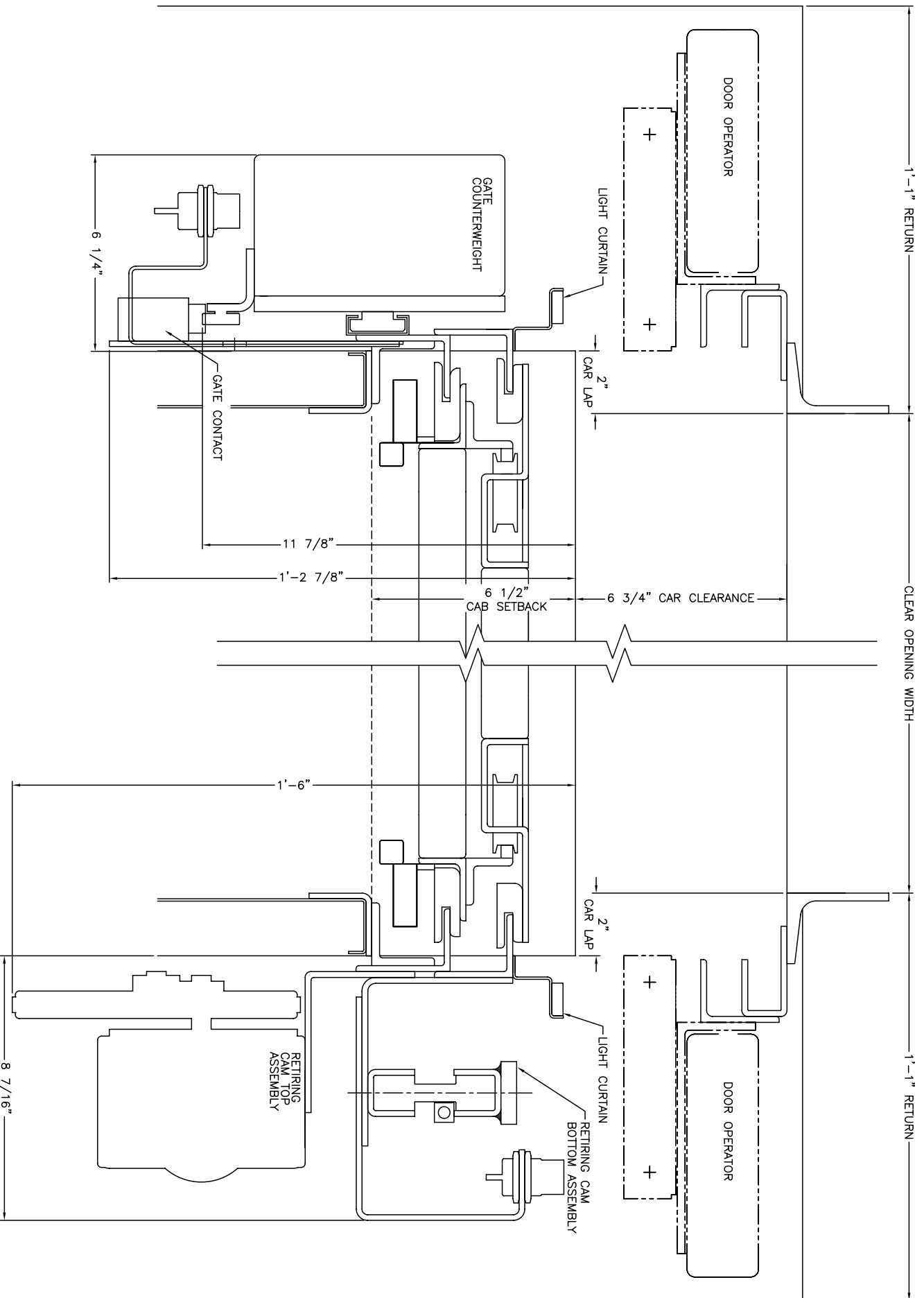
POWER OPERATED SINGLE SECTION GATE WITH PASS TYPE BI-PARTING DOOR



MANUAL OPERATED SINGLE SECTION GATE WITH PASS TYPE BI-PARTING DOOR



POWER OPERATED TWO SECTION GATE WITH PASS TYPE BI-PARTING DOOR



MANUAL OPERATED TWO SECTION GATE WITH PASS TYPE BI-PARTING DOOR

