

## Submersible Power Unit Motor Hoist

MEI's Pully Bully will make changing a submersible pump or motor a snap! The Pully Bully is a safe, economical method that will save you time and frustration on your next service call.

### Benefits

- Safe Operation
- Reduced Labor Hours
- Light Weight
- Quick & Easy Setup
- Easy Clean Up
- Portable Cart

### Specifications

- Lifting Capacity: 500 lbs.
- Complies with ASME B30.17 - 1998
- Weight: 185 lbs.
- Instructions Included

### How it Works

Roll the Pully Bully into the machine room. Detach the hoisting frame from the cart (the cart/drip pan will later serve as a workbench that collects the excess oil). Set up the hoisting frame (see photos below). Use the chain hoist to rig and pull the pump/motor combination out of the power unit. Set the pump/motor combination on the cart/drip pan, and make the necessary repairs.



Part No. 17936



One Unit



Detach the Hoisting Frame



Set-Up the Hoisting Frame



Hoisting



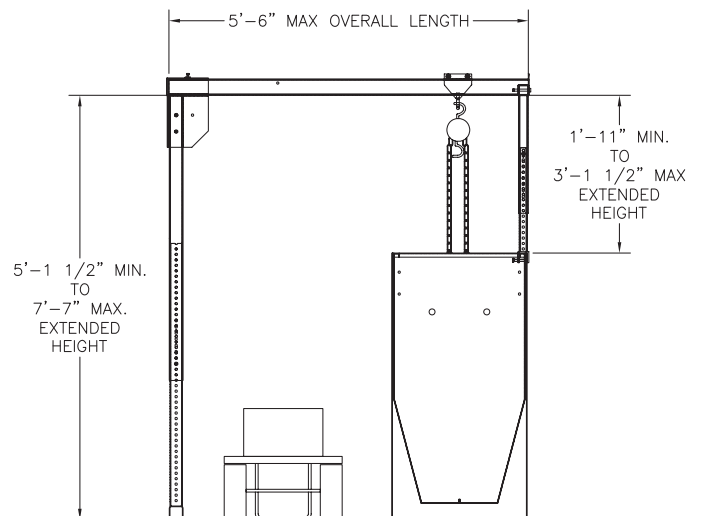
Lower Onto Tray & Repair



### Easy Clean Up

The excess oil funnels into a removable container located under the drip pan. Simply remove the container and pour the excess oil back into the tank.

Part No.	Description
17936	Submersible Power Unit Motor Hoist
<b>Replacement Kits</b>	
21973	Pully Bully Oil Collection Kit
21974	Pully Bully Tank Frame Attachment Kit
21975	Pully Bully Main Frame Kit





# PRODUCT ORDER FORM

Minnesota Elevator, Inc.

## Pully Bully

### ORDER INFORMATION:

Order Date \_\_\_\_\_

Quantity	Part No.	Description	PPU	Total
	17936	Submersible Power Unit Motor Puller	\$1599.00	

### BILLING INFORMATION:

Company Name \_\_\_\_\_

Ordered/Authorized By \_\_\_\_\_

PO # \_\_\_\_\_

Billing Address \_\_\_\_\_

Phone \_\_\_\_\_ Fax \_\_\_\_\_

E-mail (optional) \_\_\_\_\_

### SHIPPING INFORMATION: *Estimated ship weight: 185 lbs. Size: 26"W x 68-1/2" H x 26" D*

Preferred Carrier \_\_\_\_\_  
*(if no preference is indicated, MEI will determine carrier)*

Ship Method  Next Day Air-AM Delivery  Next Day Air  2-Day Air  3-5 Day Ground

Freight Billing  Pre-Paid & Add  Collect  3rd Party

Shipping Address \_\_\_\_\_  
*(if different from above)*

Phone \_\_\_\_\_ Fax \_\_\_\_\_

**This order form may be mailed, faxed or e-mailed to:**  
 Minnesota Elevator, Inc. • 19336 607<sup>th</sup> Avenue • Mankato, MN 56001  
 ph: 507-245-3060 • fax: 507-245-4198 • email: [mei@minnesotaelevator.com](mailto:mei@minnesotaelevator.com)