

## Standard Equipment

- Imo Pump
- Imperial Motor - Maximum 50 HP Per Motor; Up to 2 Motors Per Tank
- 80 Starts Per Hour Motor
- Maxton Valve
- Compact Silencer with Pneumatic Noise Suppression
- Oil Level Dip Stick
- Isolation Between the Pump/Motor Assembly and the Tank
- Victaulic Fittings
- MEI Oil Cooler Ready
- Seismic Compliant

## Standard Options

- Loadweigh Switch
- Tank Heater
- Viscosity Temperature Switch
- Oil Level Sight Gauge with Thermometer (on tank)
- Pressure Gauge (mounted on valve)
- Low Oil Level Switch (in tank)
- Low Pressure Switch (required if jack head is above power unit)
- Oil Cooler
- Oil Return Pump
- Vent/Fill Strainer
- Down Speed Regulated Valve
- 120 SPH (up to 40 HP)
- Drain Valve
- Overflow Connection
- Frame to Floor Isolation

## Exceptionally Clean

- Your machine room stays spotless, since all components are mounted inside the tank.

## Attractive Compact Design

- The MEI submersible power unit is small enough to fit through most machine room doorways.

## Quiet Operation

- Silencer is mounted inside the tank.



## Power Unit Sizes

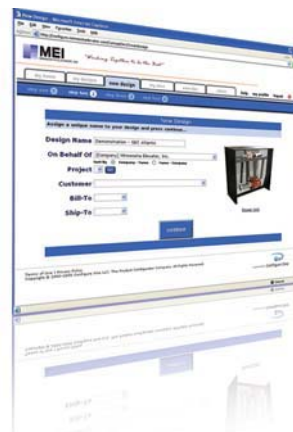
Model	Width	Depth	Height	Motors	Transferable Oil
SS-29	41"	20-3/4"	40-3/4"	Single	35 gal.
SS-88	51"	24-3/4"	48-3/4"	Single	80 gal.
SS-88 Tall	51"	24-3/4"	54-3/4"	Single	109 gal.
ST-109	51"	34"	50-3/4"	Single or Tandem	127 gal.
ST-109 Tall	51"	34"	56-3/4"	Single or Tandem	167 gal.
ST-200	63"	34"	55-1/2"	Single or Tandem	204 gal.
ST-200 Tall	63"	34"	61-1/2"	Single or Tandem	255 gal.

**Standard Lead Time = 7-10 Days**  
**Expedited Shipment Available**



## green tip

Vegetable based oil may be used in place of petroleum-based oil.



## Online Ordering

MEI's Submersible Power Units can be Configured and Ordered Online!

**Build, Save, & Edit your own Quote... Online, Anytime!**

### About our Online Configurator

Our Online Configurator allows you to generate quotes and order equipment 24/7 from the convenience of your desktop. Quotes can be saved for later editing or copied to save time pricing a similar project.

Register online today to begin using MEI's Configurator!  
[www.minnesotaelevator.com](http://www.minnesotaelevator.com)

Or contact a sales representative for a quote today!  
 ph 507-245-3060 • fax 507-245-3275

Today's Date: \_\_\_\_\_

Quote Due Date: \_\_\_\_\_

## POWER UNIT QUOTE REQUEST

Customer: \_\_\_\_\_  
 Contact: \_\_\_\_\_  
 Phone: \_\_\_\_\_ Cell: \_\_\_\_\_  
 Fax #: \_\_\_\_\_  
 Email: \_\_\_\_\_

Job Name: \_\_\_\_\_  
 Location: \_\_\_\_\_  
 Required Ship Date: \_\_\_\_\_  
 Shipping Address: \_\_\_\_\_  
 \_\_\_\_\_

### Car Type

- Borehole      Holeless:  
 Twin Jack       Twin Roped  
 Cantilevered       Single Roped  
 Telescopic

### Power Unit

- Submersible       Dry/Belt-Drive

Standard Specification for:

#### Submersible

- Imperial Motor
- IMO Pump
- Maxton Valve
- Chamber Muffler
- Dip Stick
- Drip Pan

#### Dry/Belt-Drive

- Imperial Motor
- IMO Pump
- Maxton Valve
- Chamber Muffler
- Oil Level Sight Gauge

### Available Options

- Air Bladder Muffler
- Unistrut for Mounting Controller
- Low Oil Switch
- Low Pressure Switch
- Viscosity Control Sensor
- Oil Cooler     1-Phase     3-Phase
- Tank Heater
- Vent Filter Breather
- Oil Level Sight Gauge / Thermometer
- Oil Return Pump
- Load Weight Switch
- Shut-Off Valve Qty: \_\_\_\_\_
- Starter With Cabinet     Soft Start     Y-Delta

### Project Data

Capacity\* \_\_\_\_\_ Gross Load\* \_\_\_\_\_  
 Piston O.D. \_\_\_\_\_  
 Pressures (if available):  
     No Load: \_\_\_\_\_ Full Load: \_\_\_\_\_  
     Static: \_\_\_\_\_ Static: \_\_\_\_\_  
     Working: \_\_\_\_\_ Working: \_\_\_\_\_

Car Speed\* \_\_\_\_\_

Existing HP: \_\_\_\_\_

Power Supply

Volts\* \_\_\_\_\_ Phase: \_\_\_\_\_ Hz: \_\_\_\_\_

Total Travel: \_\_\_\_\_

Motor Duty Rating:

- 80 Starts Per Hour  
 120 Starts Per Hour

Valve Coil Voltage: \_\_\_\_\_ (Standard 115VAC)

Existing Oil Line Size: \_\_\_\_\_

Oil Line Outlet Side When Facing Tank:

- Right Hand     Left Hand

Oil Line Outlet Fitting:

- Victaulic     Male Threaded

Machine Room Door Width: \_\_\_\_\_ Height: \_\_\_\_\_

Conditions Requiring A Special Power Unit Size: \_\_\_\_\_  
 \_\_\_\_\_  
 \_\_\_\_\_

**\* Required Fields**

Standard Lead-Time:

Submersible = 7-10 Days } Expedited shipment available upon request.  
 Dry/Belt-Driven = 4-6 Weeks }