

Extend the Life of your Hydraulic Elevator System!

Avoid hot oil problems like nuisance shutdowns, leveling problems, and oil odor by installing the MEI BOL Oil Cooler.

Designed to be mounted in a remote location in order to connect to the duct/ventilation system of the building.

Benefits

- Smoother stops and starts
- Extended component life
- Fewer shutdowns
- Overall performance improvement
- Filter sight gauge

Recommended Applications

- Twin jack holeless applications with two- or three-stage telescopic jacks.
- Heavily used single-stage twin jack holeless projects.
- Roped hydraulic applications with moderate usage and travel exceeding 25 feet.
- Any hydraulic elevator with high usage.

Specifications

- ¾ HP, 115 VAC, 1 phase, 7.2 FLA pump motor or 208-230 VAC, 1 phase, 3.6 FLA pump motor
- ½ HP, 115 VAC, 1 phase, 3.7 FLA 1425 CFM fan motor or 208-230 VAC, 1 phase, 2.2 FLA 1425 CFM fan motor
- Heat removal: 21,600 BTU/hr @ 40°F temp delta
- 8 GPM, 75 PSI cast iron pump
- Weighs approximately 140 lbs
- Adjustable thermostat control
- 80db at 3 ft.
- Electrical requirement, 115 or 208 VAC, 1 phase, 20amp separate circuit
- 10 micron filter in hydraulic oil line
- Filter head with sight gauge to indicate when the filter needs to be changed
- Heavy gauge frame construction
- Includes all fittings and hardware needed for ventilation duct mount installation
- Includes instructions for installation

How it Works

This Oil Cooler is designed to be mounted in a remote location* in order to connect to the duct/ventilation system of the building. When the oil temperature in the reservoir reaches a preset limit, it is circulated through the radiator. This process reduces the oil temperature by nearly 40°F, depending on site conditions. The oil is also filtered as it runs through the system, which results in enhanced performance and extended component life. The filter head has a sight gauge to indicate when the filter needs to be changed.

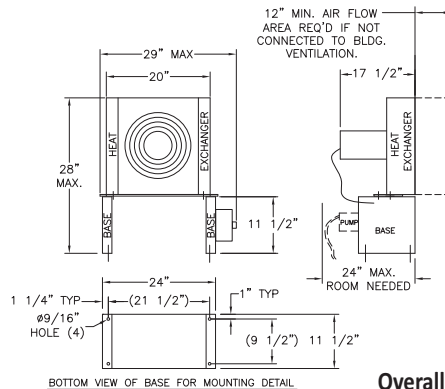
*Remote location must be within 110 feet horizontally or 55 feet vertically from the power unit. Piping, wiring, and conduit to remote location are not included.



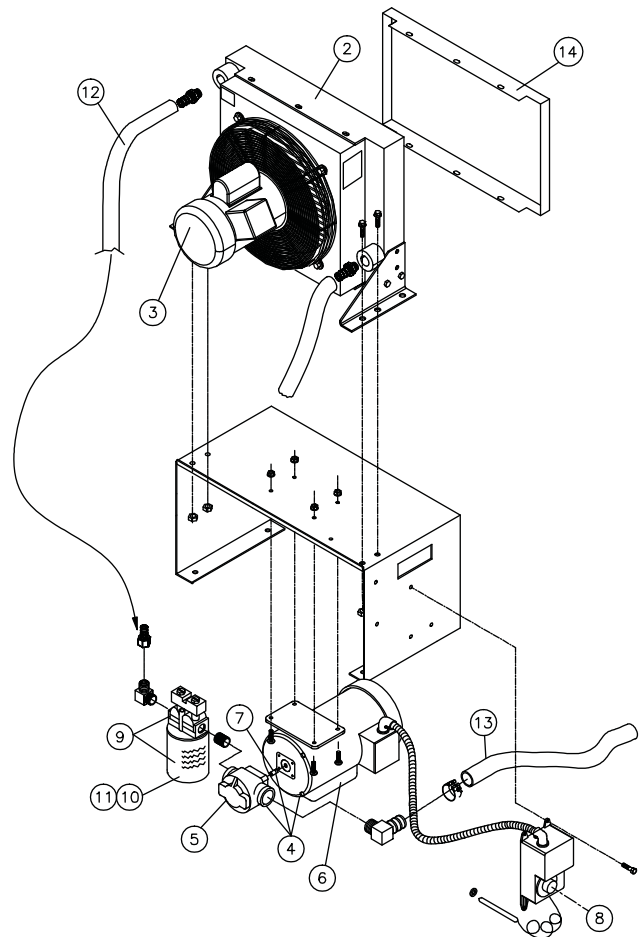
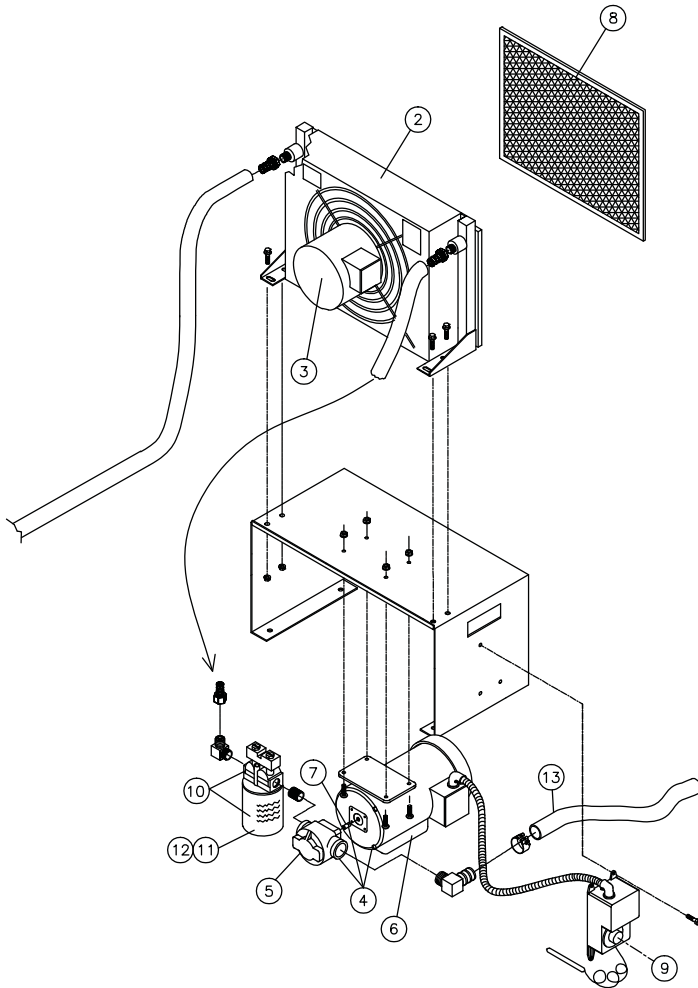
Part No. 20856



Typical Installation Shown



Overall Dimensions



AOC - Oil Cooler Parts

Item	Part No.	Description
	10248	Complete Oil Cooler Assembly - AOC (Direct or Remote Mount)
2	1916	Heat Exchanger and Motor Assembly
3	1463	Motor for Heat Exchanger (Motor Only)
4	1890	Motor & Pump Combination with Coupling
5	13412	Oil Pump (Pump Only)
6	13411	Oil Pump Motor (Motor Only)
7	15527	Oil Pump & Motor Coupling (Between Motor & Pump)
8	13410	Air Filter for Front of Heat Exchanger
9	19475	Thermostat for Oil Cooler
10	19119	Filter Head with Sight Gauge 10 Micron Filter
11	1953	Oil Filter Replacement (10 Micron Filter - Standard)
12	17465	Oil Filter Replacement (3 Micron Filter - Optional)
13	19340	Suction Hose 1" x 8'-0" Long (U416 1" I.D. SEA 100R4)

Item	Part No.	Description - Options
	21755	Remote Weather Protection Housing
	19919	Cold Weather Kit
	21895	Oil Cooler Pump Seal

BOL - Oil Cooler Parts

Item	Part No.	Description
	20856	Complete Oil Cooler Assembly - BOL
2	20916	Heat Exchanger and Motor Assembly
3	20917	Motor for Heat Exchanger (Motor Only)
4	1890	Motor & Pump Combination with Coupling
5	13412	Oil Pump (Pump Only)
6	13411	Oil Pump Motor (Motor Only)
7	15527	Oil Pump & Motor Coupling (Between Motor & Pump)
8	19475	Thermostat for Oil Cooler
9	19119	Filter Head with Sight Gauge 10 Micron Filter
10	1953	Oil Filter Replacement (10 Micron Filter - Standard)
11	17465	Oil Filter Replacement (3 Micron Filter - Optional)
12	12793	Hose 3/4" I.D. x 50' Long Hydraulic Low Pressure
13	19340	Suction Hose 1" I.D. x 8'-0" Long (U416 1" ID SEA 100R4)
14	20982	Duct Screwing Flange

Item	Part No.	Description - Options
	21755	Remote Weather Protection Housing
	19919	Cold Weather Kit

PRODUCT ORDER FORM

Minnesota Elevator, Inc.
OIL COOLER - P/N 20856



ORDER INFORMATION:

Order Date _____

Quantity	Part No.	Description	PPU	Total
	20856	Complete Oil Cooler Assembly	\$2759.00	

BILLING INFORMATION:

Company Name _____
 Ordered/Authorized By _____
 PO # _____
 Billing Address _____

 Phone _____ Fax _____
 E-mail (optional) _____

SHIPPING INFORMATION: *Estimated ship weight: 145 lbs. Size: 27" W x 36" H x 20" D*

Preferred Carrier _____
(if no preference is indicated, MEI will determine carrier)

Ship Method Next Day Air-AM Delivery Next Day Air 2-Day Air 3-5 Day Ground

Freight Billing Pre-Paid & Add Collect 3rd Party

Shipping Address _____
(if different from above)

Phone _____ Fax _____

This order form may be mailed, faxed or e-mailed to:
 Minnesota Elevator, Inc. • 19336 607th Avenue • Mankato, MN 56001
 ph: 507-245-3060 • fax: 507-245-4198 • email: mei@minnesotaelevator.com